

FIXXOO

Display Repair Set

für/for

12

Mini

Anleitung / Manual

FIXXOO



With the Fixxoo repair set, you can bring your iPhone back to life in no time! Everything you need is included in this package.

You can find complete video instructions, FAQ, and further help with repairing your iPhone 12 Mini at

www.fixxoo.com

Safety information

1. Your smartphone must be turned off during assembly/disassembly. Also, the battery can be disconnected before changing the display for additional safety. The battery must not be bent, broken, pierced, or damaged in any way during assembly/disassembly. A damaged battery can cause injury.
2. **Handle the display with care. The LCD display of this device has a very thin protective glass layer which can be scratched, damaged, or imprinted if pressure is applied to it.**
3. **The display must not be bent, broken, pierced, or damaged in any way. A damaged display can cause injury.**
4. Do not expose the display or iPhone to open flames or liquids.
5. Protect the display and the iPhone from impacts.
6. Do not use the iPhone if it is damaged, as this can cause overheating and injury.
7. Read these instructions carefully and keep them for future reference.
8. Follow all warnings, instructions, and indications in the included documents.

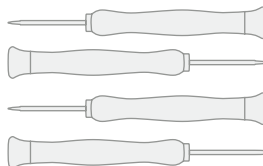
Please note: After changing the display, the iPhone is no longer watertight, and all warranties provided by the manufacturer are voided!

Your tools



Spudger

With the spudger you can lift and separate plugs and other components.



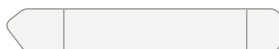
Screwdrivers

Three high-quality screwdrivers (Pentalobe, phillips, and tri-wing, stand-off) help you remove and insert the different types of screws.



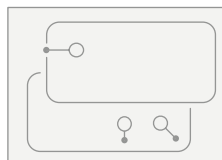
Suction puller

You'll need the suction puller to lift the display.



Lifting tool

With the lifting tool you can loosen glued areas and remove components from the case.



Screw map

The magnetic screw map lets you collect screws and other small metal parts until you need them for reassembly.

Successful DIY repair

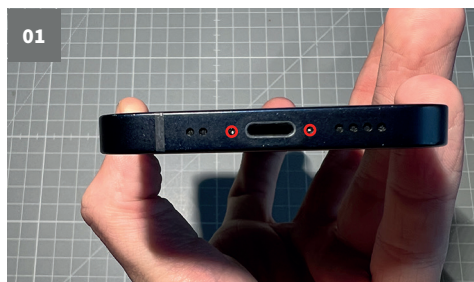
You'll find all the information in this repair manual printed in three colors:

All the information directing you step-by-step through the DIY repair of your iPhone is in gray. Follow these steps to complete the repair successfully.

Optional information which makes the repair easier is in italics.

All warning indications which are critical to follow, even if they are not part of the step-by-step repair, are in red.

PART 1: REMOVING THE DISPLAY



Opening the case

⚠ Discharge the battery to 20% or less before beginning the DIY repair. Otherwise it could possibly catch fire or even explode in case of accidental damage.

- Turn off the iPhone before you begin.
- Remove both 6.9mm Pentalobe screws at the bottom edge of the phone.
- *Tip: After opening the iPhone, the seals will no longer be watertight, so it's best to install new seals. If you don't wish to do this, you should be careful with the iPhone in wet environments.*
- *Tip: You can continue to use the Pentalobe screws if the black rubber seal is undamaged. If it is not, it is better to replace the screws.*

Masking the display

- Is your display cracked? Then you should cover it with adhesive tape in order to avoid injury.
- Overlap the tape strips so that they completely cover the surface of the display.
- *This makes the display more stable and easier to remove.*

⚠ Eye protection (e.g. safety glasses) is recommended during repair, to protect against any possible glass shards.

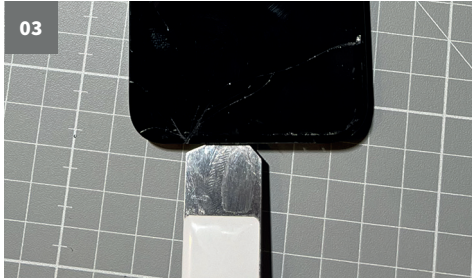
- Gently heat the bottom edge of the iPhone (where the Lightning connector is located) with a hair dryer. This softens the adhesive, making the case easier to open.

Lifting out the display with the suction puller

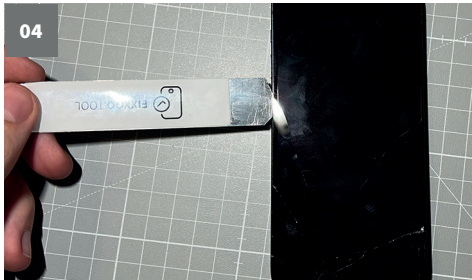


- Attach the suction puller (part of the Fixxoo tool kit) near the bottom edge of the phone.
- *Tip: if the display is heavily damaged, you can either attach the suction puller with adhesive tape or form a handle with tape (instead of the suction puller) and stick it on the display. As a last resort, you could attach the suction puller to the cracked display with strong glue.*
- Pull the display glass up with the suction cup to open a small gap between the display and the frame. Insert the pick there.
- Lift the display glass with the suction puller to open a small gap between the display and the frame.
- Insert the lifting tool into the gap.
- The adhesive is very strong, so you'll need to use some muscle to open a gap. Heat helps! Use a hair dryer to soften the glue on the bottom edge.
- Move the suction puller repeatedly upward and downward. If it is too difficult to open a gap, you'll need to apply more heat. Carefully move the display up and down, loosening the adhesive, until the gap is wide enough to insert the tool.

EN Separate the glue seal between the display and the frame.



- Starting from the lower-left corner, slide the lifting tool up the left side of the frame (to the position of the mute button), to separate the glue seal holding the display and frame together.



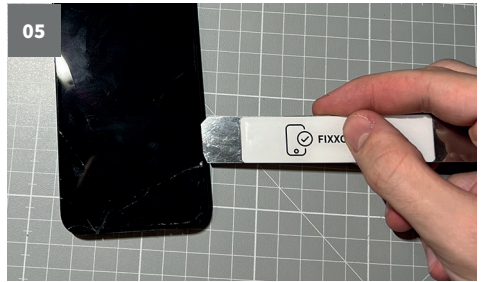
- Repeat this step starting from the bottom edge and going along the right side of the frame.

⚠ Do not insert the lifting tool too far into the iPhone, to avoid damaging inner components.

Loosening the upper edge

- Now the display is still attached to the frame at the upper edge. It is attached here with both glue and clips
- Slide the lifting tool around the upper right corner. Gently move the display toward the bottom edge, gently wiggling the display.

⚠ Be patient and gentle so as not to damage the clips. Also, be sure not to insert the lifting tool more than a few millimeters into the case, to avoid damaging the sensors at the upper end of the display.



- Completely separate the rest of the glue at the upper end of the frame by sliding the lifting tool to the left.

Removing the suction puller

- Next, remove the suction puller by pulling on the small tab at the edge. Now you can remove it from the display.

Opening the iPhone

- The display is connected to the logic board on the left side of the iPhone with ribbon cables. You can open it from the right edge just like a book.

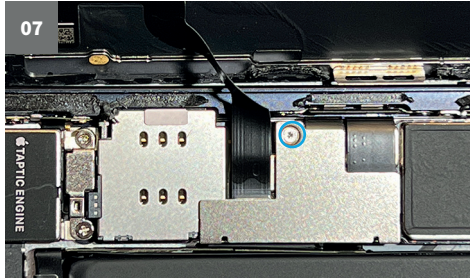
⚠ Open the iPhone carefully so as to avoid damaging the sensitive cables.

- *Tip: use an object to support the display from underneath.*

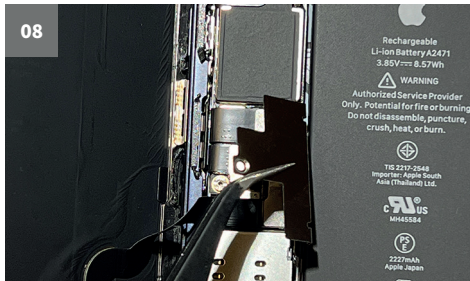


PART 2: WORKING ON THE IPHONE CASE

Removing the cover of the battery connector

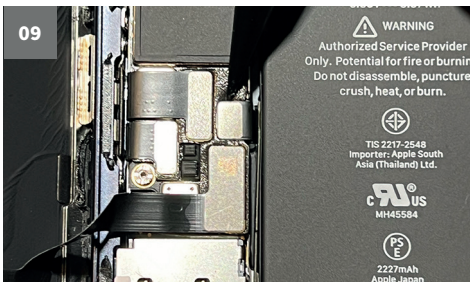


- There is a cover to the left of the battery
- Loosen the Triwing screw with the screwdriver.



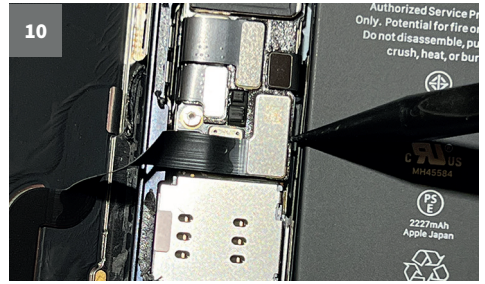
- Then you can remove the cover with the tweezers.

Remove Battery & display connector



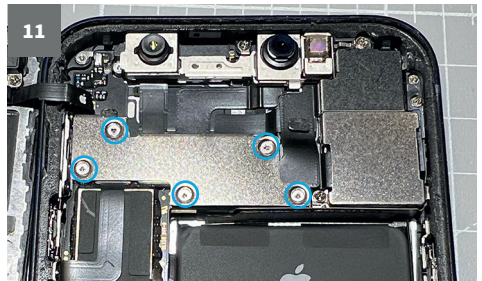
- Remove the battery plug with the tip of the spudger.

⚠ Like the other plugs in the device, the battery plug has a black silicone seal which protects it from water and dust. Take care not to damage this seal.

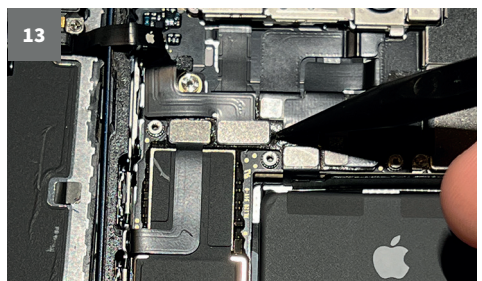


- The display connector (with a QR code print), which you remove next, is located below the removed battery connector.

Disconnect front sensor cover

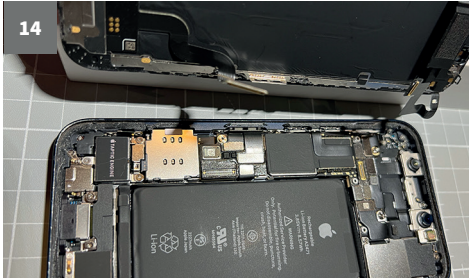


- The front sensor unit is protected by a cover with five screws.
- Use the triwing screwdriver to remove it.
- Then remove the cover with the tweezers.



EN ⚠ **Important: The ribbon cable must not be stretched in order not to damage it.**

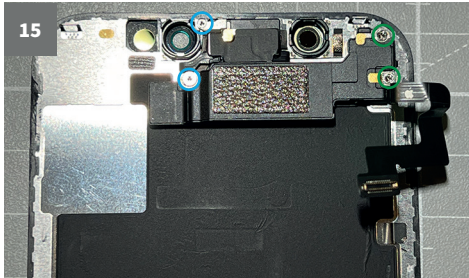
Lifting the display



- The first half is done and the display is separated from the housing.
- Put the housing away. You no longer need it.

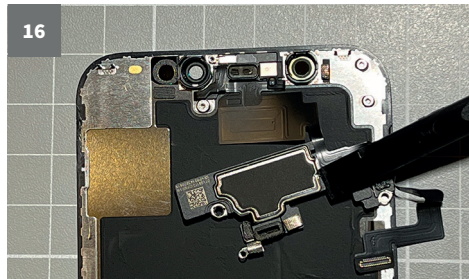
PART 3: WORKING ON THE DISPLAY

Removing the speaker/sensor unit



- Now let's look at the damaged display. Remove two triwing screws (blue) and two Phillips screws (green)

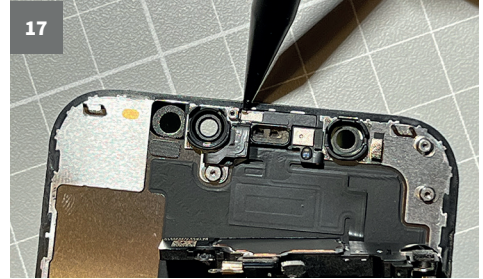
Folding down the loudspeaker



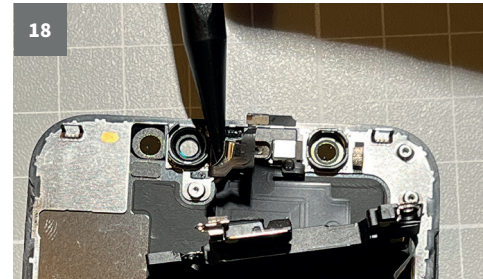
- Fold the speaker unit away from the top edge of the display.
- This is glued in place. If it does not come off by itself, a little heat from a hair dryer will help.

Releasing the proximity sensor

- Before you continue, heat the top edge of the display with a hair dryer. One minute should be enough.

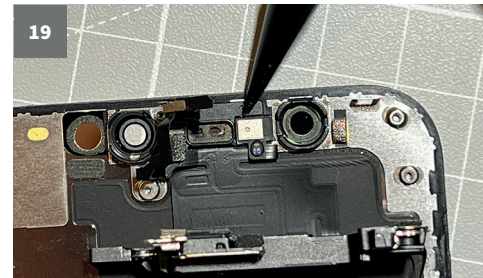


- Insert the tip of your spudger under the proximity sensor and release it from its recess, which is attached with a ribbon cable that is glued.
- Remove the adhesive without damaging the cable.



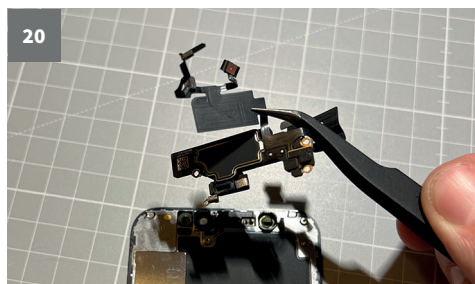
- Schiebe den Spudger unter das breite Kabel und löses es ab.

Removing the flood illuminator



- Now you can release the Flood Illuminator from its recess by using either the spudger or the tweezers.

Remove speakers and front sensors



- Now you can remove the upper speaker and the front sensor unit with the tweezers.
- Make a good impression of the position for re-installation.
- You have now removed all the elements! Congratulations! The installation of your new Fixxoo display can now begin.

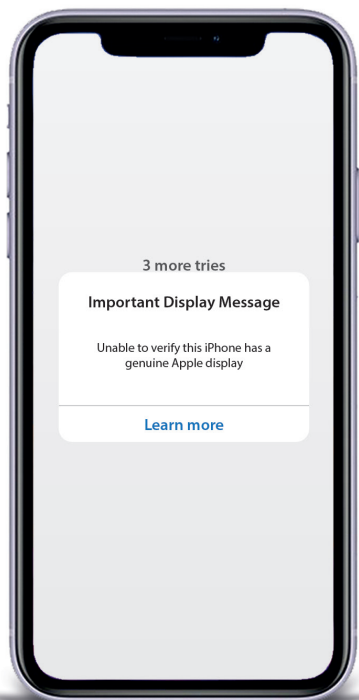
Reinstalling the Fixxoo display

- When reinstalling the Fixxoo display you'll simply repeat the steps in this instruction guide in reverse order.

Please pay attention to the following:

- **Figure 20:** The module must be aligned so that the proximity sensor and flood illuminator are not obstructed by glue. This could impact their function.
- **Figure 12/13:** If you want to replace the display seals, do this before reattaching the front sensor plug.
- **Figure 13: This and other plugs are so-called pressure plugs. These must be carefully aligned during reassembly and pressed down on one side until it engages. Then repeat this on the other side. A pressure in the middle could bend the pins and damage the component or the plug.**
- **Figure 9:** Turn the phone on and check its functioning. Check the following things:
 - » Screen
 - » Sound
 - » Touch sensitivity
 - » Proximity sensors
 Does everything work? Then you can close the case.
- **Figure 7:** Be careful to place the display in the correct position and position the clips at the upper edge correctly. First, carefully press the upper edge into place, then seat the remaining edges of the display. Be careful not to bend the clips.

After installing the display, this error message may appear when starting up:



The reason is simple - from iPhone 11 onwards, the touch module is installed on the back of the display - and you have just replaced it. When booting up, the iOS operating system checks all components and notices that a new touch module is active.

You can ignore the error message (which you can also find in the settings). There is a DIY solution that involves soldering the old touch module to your new display - but this is only recommended for very advanced users.

⚠ This exchange is not recommended and is not supported by FIXXOO.

In everyday use, however, this error message, which only appears during startup, is not a problem.

Further information

With these repair instructions, you can reinstall a number of elements and sensors from your iPhone. These are:

- the transparent plastic holder of the front camera
- the sensor unit
- the earphone loudspeaker

These are not replaced with the FIXXOO Display Repair Set and it is particularly important to handle the sensors with care.

The sensor unit is connected to the logic board of your iPhone with a sensitive flex cable and is transferred to the new display during the repair. The Flood Illuminator (from Figure 18) is part of the Face ID technology.

⚠ If this is damaged, Face ID will no longer work and you will have to log in using other login functions (PIN).

Declaration of conformity

Stage10 GmbH hereby certifies that the electrically operated display screen conforms to guideline 2014/53/EU.

The complete text of the EU declaration of conformity is available at the following URL:

<https://support.fixxoo.de/hc/de/articles/14973641242770>



Disposal

Disposal of packaging:



Sort the packaging before disposal:

- » Cardboard and carton with paper
- » Plastic wrap with recycling collection

Disposing of a device:

(applicable in the European Union and other European countries with systems for separate collection of recyclables)



Used devices may not be placed in the household trash.

■ If your smartphone can no longer be used, each consumer is legally obligated to dispose of used devices separately from household trash, e.g. at a collection site in your community or municipality. This ensures that used devices are properly recycled, while avoiding negative environmental effects. For this reason, electronic devices are labeled with the symbol depicted here.

Manufacturer information and service

If you have questions about our display products, or if you experience any problems, first contact us by email at:

info@fixxoo.de

Fixxoo is a trademark of
Stage10 GmbH | Leipziger Platz 9 | 10117 Berlin

Troubleshooting

Does the display fail to turn on? Pixel errors? Is the iPhone beeping or vibrating? You can find the solution in our FAQ at:

support.fixxoo.de/hc/de

Fixxoo success guarantee:

Did it not work for you? No problem – Fixxoo will take care of the rest. The price of the repair kit will be credited to you. So you'll pay at most the regular price for a Fixxoo repair.

The only condition: The replacement part and your iPhone cannot have been damaged by your repair attempt – but if you're simply missing a screw, that's not so bad.

FIXXOO

Display Repair Set



Fixxoo Support:
support.fixxoo.de/hc/de

Fixxoo
Display Repair Set
for Apple iPhone 12 Mini
Art.-No. 16220
Fixxoo is a trademark of
Stage10 GmbH
Leipziger Platz 9
10117 Berlin | Germany

FIXXOO

iPhone is a trademark of Apple Inc.,
registered in the U.S. and other countries.

