

# Fixxoo Display Repair Set

for  
iPhone  
**XS**

Anleitung | Tutorial |  
Instruction | Istruzioni | Guia

**FIXXOO**



With the Fixxoo repair set, you can bring your iPhone back to life in no time! Everything you need is included in this package.

You can find complete video instructions, FAQ, and further help with repairing your iPhone XR at

[www.fixxoo.com](http://www.fixxoo.com)

## Safety information

1. Your smartphone must be turned off during assembly/disassembly. Also, the battery can be disconnected before changing the display for additional safety. The battery must not be bent, broken, pierced, or damaged in any way during assembly/disassembly. A damaged battery can cause injury.
2. **Handle the display with care. The LCD display of this device has a very thin protective glass layer which can be scratched, damaged, or imprinted if pressure is applied to it.**
3. **The display must not be bent, broken, pierced, or damaged in any way. A damaged display can cause injury.**
4. Do not expose the display or iPhone to open flames or liquids.
5. Protect the display and the iPhone from impacts.
6. Do not use the iPhone if it is damaged, as this can cause overheating and injury.
7. Read these instructions carefully and keep them for future reference.
8. Follow all warnings, instructions, and indications in the included documents.

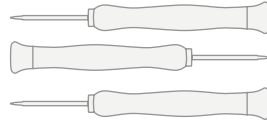
**Please note:** After changing the display, the iPhone is no longer watertight, and all warranties provided by the manufacturer are voided!

## Your tools



### Spudger

With the spudger you can lift and separate plugs and other components.



### Screwdrivers

Three high-quality screwdrivers (Pentalobe, phillips, and tri-wing) help you remove and insert the different types of screws.



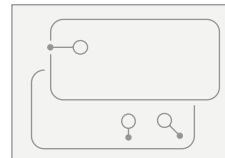
### Suction puller

You'll need the suction puller to lift the display.



### Lifting tool

With the lifting tool you can loosen glued areas and remove components from the case.



### Screw map

The magnetic screw map lets you collect screws and other small metal parts until you need them for reassembly.

## Successful DIY repair

You'll find all the information in this repair manual printed in three colors:

All the information directing you step-by-step through the DIY repair of your iPhone is in gray. Follow these steps to complete the repair successfully.

*Optional information which makes the repair easier is in italics.*  
All warning indications which are critical to follow, even if they are not part of the step-by-step repair, are in red.

## PART 1: REMOVING THE DISPLAY



### Opening the case

**⚠️ Discharge the battery to 20% or less before beginning the DIY repair. Otherwise it could possibly catch fire or even explode in case of accidental damage.**

- Turn off the iPhone before you begin.
- Remove both 6.9mm Pentalobe screws at the bottom edge of the phone.
- *Tip: After opening the iPhone, the seals will no longer be watertight, so it's best to install new seals. If you don't wish to do this, you should be careful with the iPhone in wet environments.*
- *Tip: You can continue to use the Pentalobe screws if the black rubber seal is undamaged. If it is not, it is better to replace the screws.*

### Masking the display

- Is your display cracked? Then you should cover it with adhesive tape in order to avoid injury.
- Overlap the tape strips so that they completely cover the surface of the display.
- *This makes the display more stable and easier to remove.*

**⚠️ Eye protection (e.g. safety glasses) is recommended during repair, to protect against any possible glass shards.**

- Gently heat the bottom edge of the iPhone (where the Lightning connector is located) with a hair dryer. This softens the adhesive, making the case easier to open.

### Lifting out the display with the suction puller



- Attach the suction puller (part of the Fixxoo tool kit) near the bottom edge of the phone.
- *Tip: if the display is heavily damaged, you can either attach the suction puller with adhesive tape or form a handle with tape (instead of the suction puller) and stick it on the display. As a last resort, you could attach the suction puller to the cracked display with strong glue.*
- Zieh das Displayglas mit dem Saugheber hoch, um einen kleinen Spalt zwischen Display und Rahmen zu öffnen. Dort steckst Du das Plektrum hinein.
- Lift the display glass with the suction puller to open a small gap between the display and the frame.
- Insert the lifting tool into the gap.
- The adhesive is very strong, so you'll need to use some muscle to open a gap. Heat helps! Use a hair dryer to soften the glue on the bottom edge.
- Move the suction puller repeatedly upward and downward. If it is too difficult to open a gap, you'll need to apply more heat. Carefully move the display up and down, loosening the adhesive, until the gap is wide enough to insert the tool.

## Separate the glue seal between the display and the frame.



- Starting from the lower-left corner, slide the lifting tool up the left side of the frame (to the position of the mute button), to separate the glue seal holding the display and frame together.



- Repeat this step starting from the bottom edge and going along the right side of the frame.

**⚠ Do not insert the lifting tool too far into the iPhone, to avoid damaging inner components.**

## Loosening the upper edge

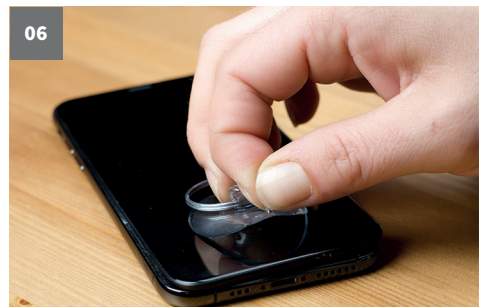
- Now the display is still attached to the frame at the upper edge. It is attached here with both glue and clips. Slide the lifting tool around the upper right corner. Gently move the display toward the bottom edge, gently wiggling the display.

**⚠ Be patient and gentle so as not to damage the clips. Also, be sure not to insert the lifting tool more than a few millimeters into the case, to avoid damaging the sensors at the upper end of the display.**



- Completely separate the rest of the glue at the upper end of the frame by sliding the lifting tool to the left.

## Removing the suction puller



- Next, remove the suction puller by pulling on the small tab at the edge. Now you can remove it from the display.

## Opening the iPhone

- The display is connected to the logic board on the right side of the iPhone with ribbon cables. You can open it from the left edge just like a book.

**⚠ Open the iPhone carefully so as to avoid damaging the sensitive cables.**

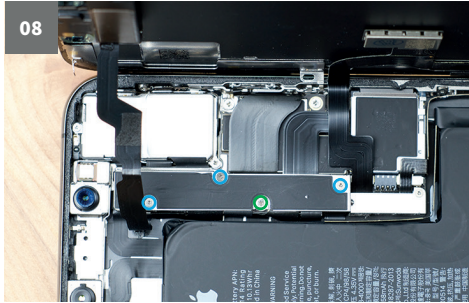
- Tip: use an object to support the display from underneath.*



## PART 2: WORKING ON THE IPHONE CASE

### Unfastening the the logic board plug bracket

EN



- The logic board plug bracket is fastened with five screws on the back cover of the iPhone.
  - » Three tri-wing screws 1.0 mm
  - » One tri-wing screw 1.3 mm
  - » One phillips screw 3.7 mm
- Remove the screws and then the bracket.

### Disconnecting the battery plug



- Insert the tip of the spudger under the battery plug and push to disconnect it.
- Bend the battery plug away from the logic board, to prevent these from touching during repair.

⚠ Like the other plugs in the device, the battery plug has a black silicone seal which protects it from water and dust. Take care not to damage this seal.

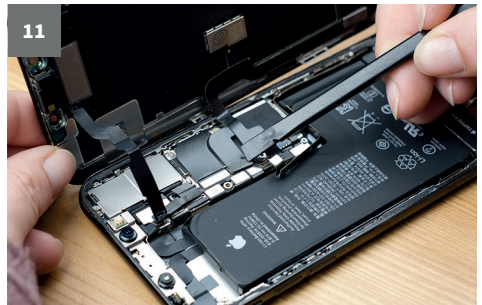
### Disconnecting the front panel sensor plug

- Insert the tip of the spudger under the front panel sensor plug and push to disconnect it.



### Disconnecting the OLED panel plug

- Insert the tip of the spudger under the OLED panel plug and push to disconnect it.



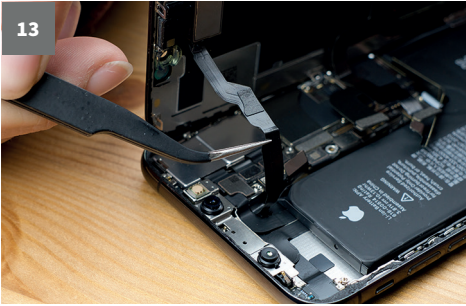
### Disconnecting the touch screen cable plug

- Insert the tip of the spudger under the touch screen cable plug, and push to disconnect it.



### Unfastening the ribbon cable

- Carefully lift the ribbon cable with twee-zers to release the glue.

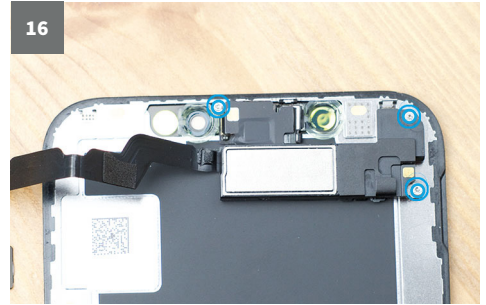
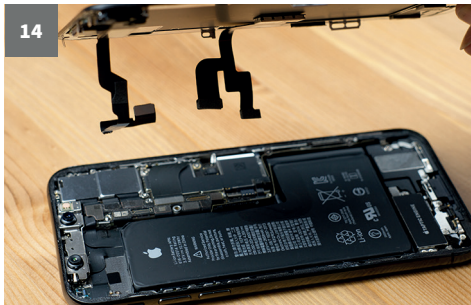


## Removing the speaker unit screws

- The speaker unit is fastened with three tri-wing screws on the back cover of the iPhone:
  - » One 1.3mm screw
  - » One 1.4mm screws
  - » One 1.9mm screw
- Remove the screws.

## Removing the display

- Now all the components are disconnected from the display, and you can remove it.



## Removing the speaker unit

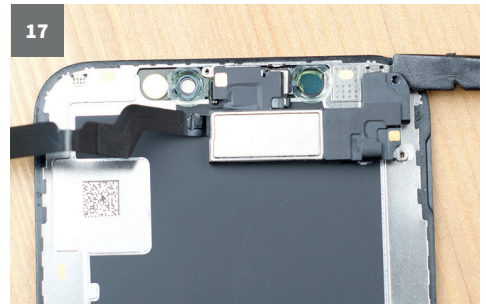
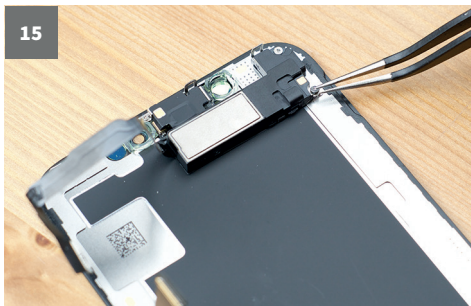
- The earphone speaker is attached with adhesive.
- Slide the spudger under the upper edge of the speaker unit. Then rotate it downward to loosen the adhesive.

**⚠ Work carefully, so as not to damage the ribbon cable connected to the speaker unit.**

## PART 3: WORKING ON THE DISPLAY

### Removing the adhesive tape from the speaker unit

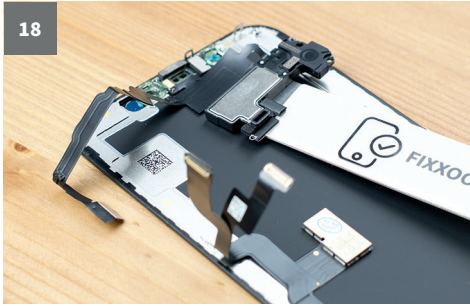
- A strip of tape covers one screw of the speaker unit (lower right) and must be removed.



## Removing the microphone

- Warm the upper edge of the iPhone with a hair dryer to soften the glue. One minute should be enough.
- Slide the lifting tool carefully under the microphone under the ribbon cable.
- You can now loosen the microphone by twisting gently.

18

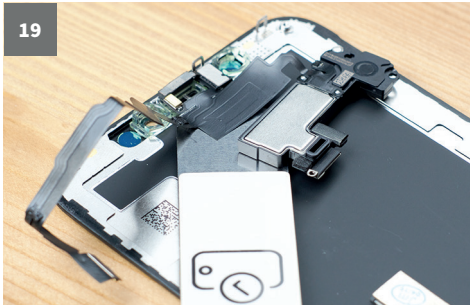


⚠ **Note:** take care not to put any tension on the ribbon cable, or it may be damaged.

- You should now be able to loosen the microphone from the recessed area in the front panel. Use a hair dryer if the glue does not release the microphone.

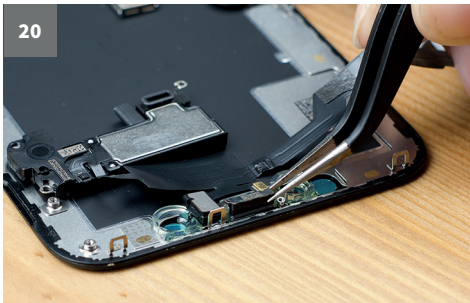
### Removing the sensor module

19



- Now you'll remove the module containing the sensors. Slide the lifting tool from left to right under the ribbon cable.
- The module should release if you gently wiggle and lift the tool.
- You can lift the speaker so that it doesn't get in the way while removing the module - but be sure not to pull on the ribbon cable.

20



- Now you can use tweezers to slide the clamp upward, away from the ambient light sensor.
- Use the tweezers to lift out the ambient light sensor. You may need to gently wiggle the tweezers. If you cannot lift out the sensor, the glue has hardened again, so soften it with a hair dryer.

⚠ **The ribbon cable must remain on the ambient light sensor. Take care not to put any tension on this also, or it may be damaged.**

### Distributor strip on the ambient light sensor

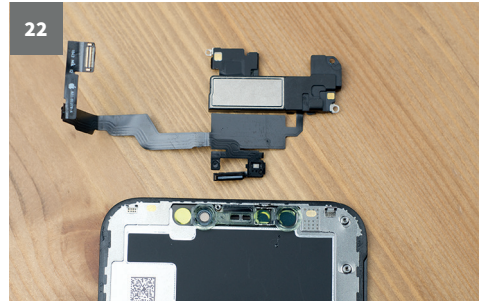
21



- Now check whether the black distributor strip has come loose from the ambient light sensor (as in the example above).
- If so, use the hair dryer to soften the rest of the glue and remove it with a thin blade (e.g. a wallpaper or hobby knife).

### Removing the assembly

22



- Now you can remove the assembly (the earphone speaker and front sensor unit).
- Now all the components have been removed.

## Reinstalling the Fixxoo display

- When reinstalling the Fixxoo display you'll simply repeat the steps in this instruction guide in reverse order.

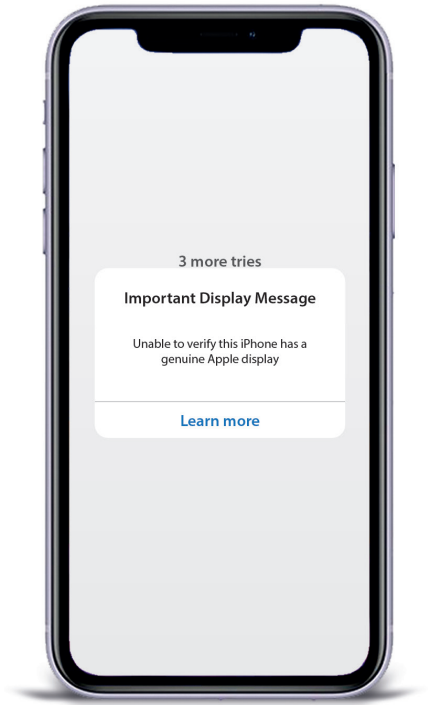
### Please pay attention to the following:

- **Figure 21:** The module must be aligned so that the proximity sensor and flood illuminator are not obstructed by glue. This could impact their function.
- **Figure 20:** Install the black distributor strip into the display as before. Then place the ambient light sensor on top. These will be securely connected when you insert the screws.
- **Figure 15:** If you want to replace the display seals, do this before reattaching the front sensor plug.
- **Figure 13:** This and other plugs are so-called pressure plugs. These must be carefully aligned during reassembly and pressed down on one side until it engages. Then repeat this on the other side. A pressure in the middle could bend the pins and damage the component or the plug.
- **Figure 9:** Turn the phone on and check its functioning. Check the following things:
  - » Screen
  - » Sound
  - » Touch sensitivity
  - » Proximity sensorsDoes everything work? Then you can close the case.
- **Figure 7:** Be careful to place the display in the correct position and position the clips at the upper edge correctly. First, carefully press the upper edge into place, then seat the remaining edges of the display. Be careful not to bend the clips.

## Notes after installation of the display

After installing the display, this error message may appear when starting up:

EI



The reason is simple - from iPhone 11 onwards, the touch module is installed on the back of the display - and you have just replaced it. When booting up, the iOS operating system checks all components and notices that a new touch module is active.

You can ignore the error message (which you can also find in the settings). There is a DIY solution that involves soldering the old touch module to your new display - but this is only recommended for very advanced users.

**⚠ This exchange is not recommended and is not supported by FIXXOO.**

In everyday use, however, this error message, which only appears during startup, is not a problem.

## Further information

With these repair instructions, you can reinstall a number of elements and sensors from your iPhone. These are:

- the transparent plastic holder of the front camera
- the sensor unit
- the earphone loudspeaker

These are not replaced with the FIXXOO Display Repair Set and it is particularly important to handle the sensors with care.

The sensor unit is connected to the logic board of your iPhone with a sensitive flex cable and is transferred to the new display during the repair. The Flood Illuminator (from Figure 18) is part of the Face ID technology.

**⚠ If this is damaged, Face ID will no longer work and you will have to log in using other login functions (PIN).**

## Declaration of conformity

Stage10 GmbH hereby certifies that the electrically operated display screen conforms to guideline 2014/53/EU.

The complete text of the EU declaration of conformity is available at the following URL:

<https://support.fixxoo.de/hc/de>

## Disposal

### Disposal of packaging:



Sort the packaging before disposal:

- » Cardboard and carton with paper
- » Plastic wrap with recycling collection

### Disposing of a device:

(applicable in the European Union and other European countries with systems for separate collection of recyclables)



**Used devices may not be placed in the household trash.**

If your smartphone can no longer be used, each consumer is legally obligated to dispose of used devices separately from household trash, e.g. at a collection site in your community or municipality. This ensures that used devices are properly recycled, while avoiding negative environmental effects. For this reason, electronic devices are labeled with the symbol depicted here.

## Manufacturer information and service

If you have questions about our display products, or if you experience any problems, first contact us by email at:

[info@fixxoo.de](mailto:info@fixxoo.de)

Fixxoo is a trademark of

Stage10 GmbH | Leipziger Platz 9 | 10117 Berlin

## Troubleshooting

Does the display fail to turn on? Pixel errors? Is the iPhone beeping or vibrating? You can find the solution in our FAQ at:

[support.fixxoo.de/hc/de](https://support.fixxoo.de/hc/de)

### Fixxoo success guarantee:

Did it not work for you? No problem – Fixxoo will take care of the rest. The price of the repair kit will be credited to you. So you'll pay at most the regular price for a Fixxoo repair.

**The only condition:** The replacement part and your iPhone cannot have been damaged by your repair attempt – but if you're simply missing a screw, that's not so bad.

# GIGA Fixxoo Display Repair Set



Fixxoo Support:  
[support.fixxoo.de/hc/de](https://support.fixxoo.de/hc/de)

Fixxoo  
Display Repair Set  
for Apple iPhone Xs  
Art.-No. 15643



4 250541 922996

**FIXXOO**

Fixxoo is a trademark of  
Stage10 GmbH  
Leipziger Platz 9  
10117 Berlin

iPhone is a trademark of Apple Inc.,  
registered in the U.S. and  
other countries.

